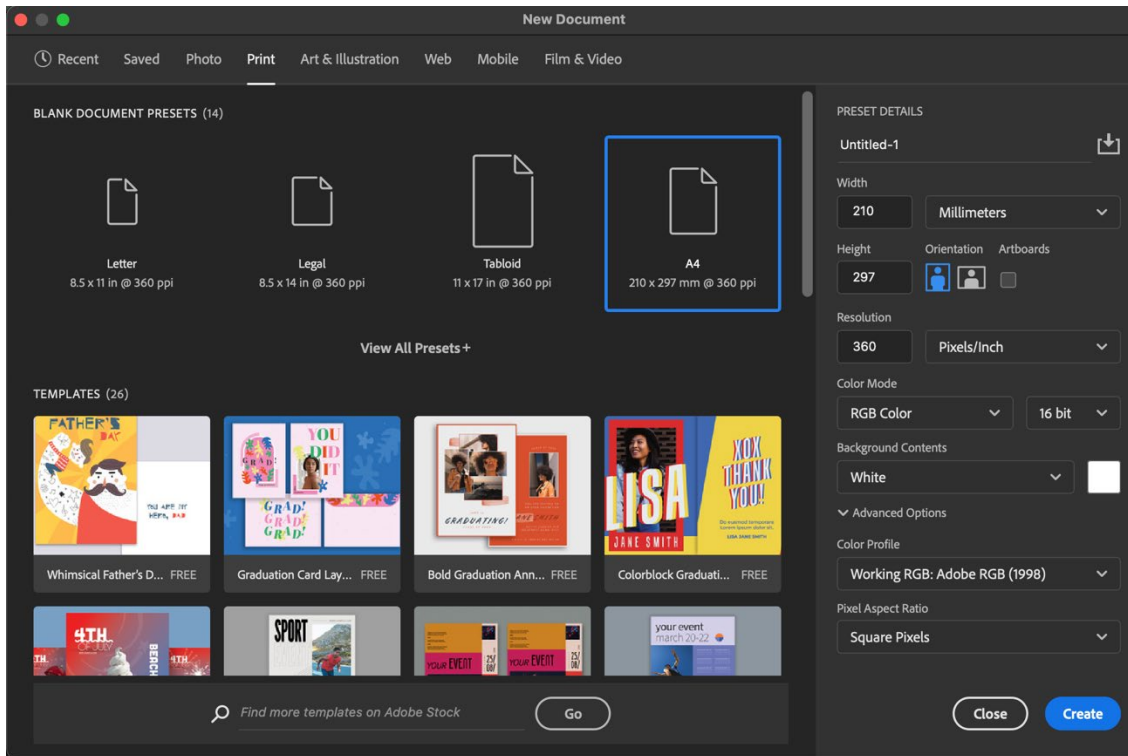
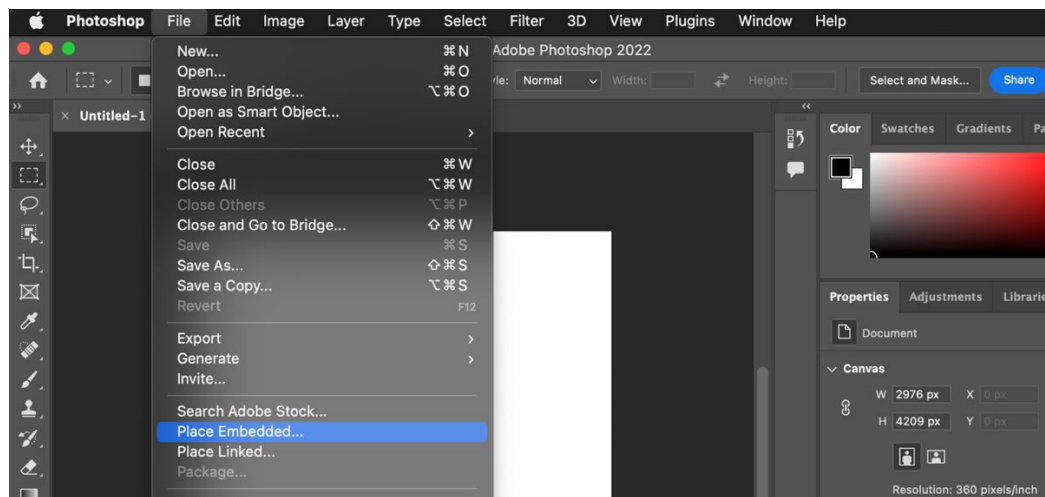


DOCUMENT PREPARATION INSTRUCTIONS

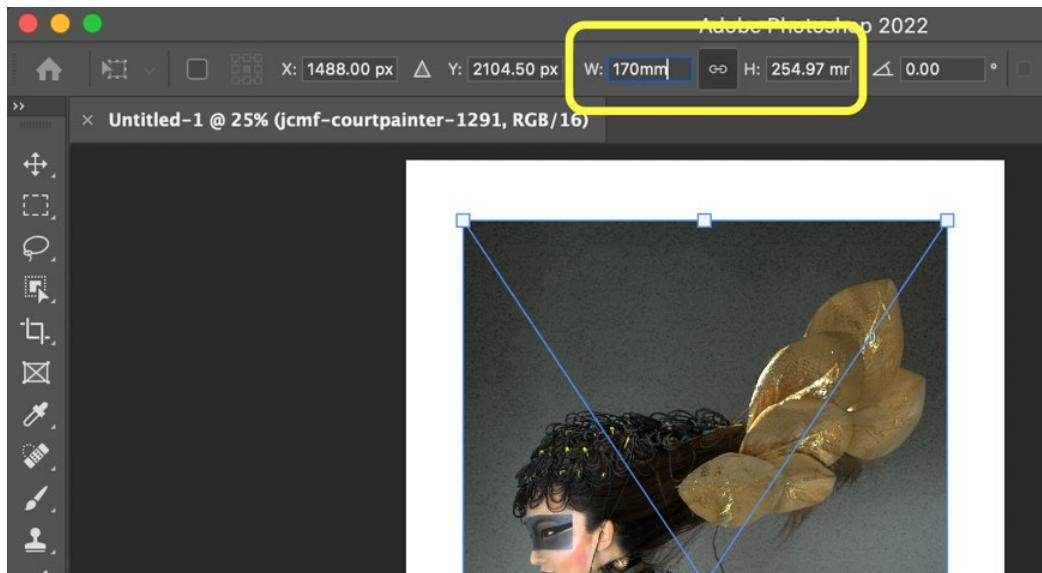


1. Create a new '*print*' document in Photoshop
 - Set the correct dimensions and resolution for your print job
 - Ensure the colour mode is RGB at colour depth of either 8-bit or 16-bit that matches your image
 - Set background to white for white bordered prints
 - In '*Advanced options*': Set colour profile to Adobe RGB (1998)

2. In the new document, 'place embedded' your final edited image file

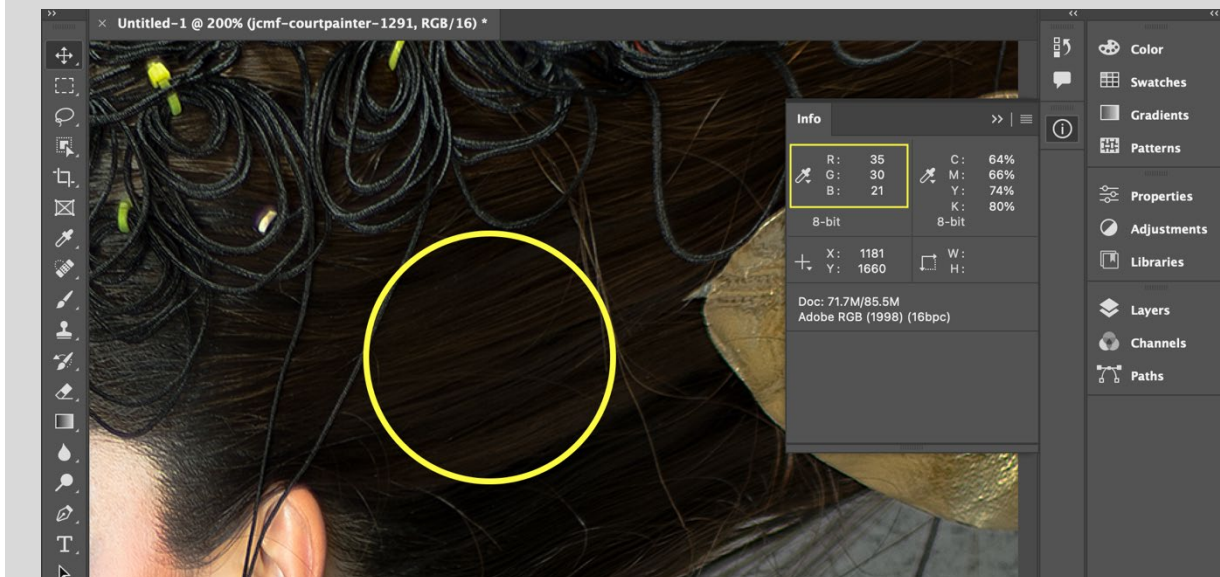


- Set image dimensions by manual input, or free-scaling
- Position image as required

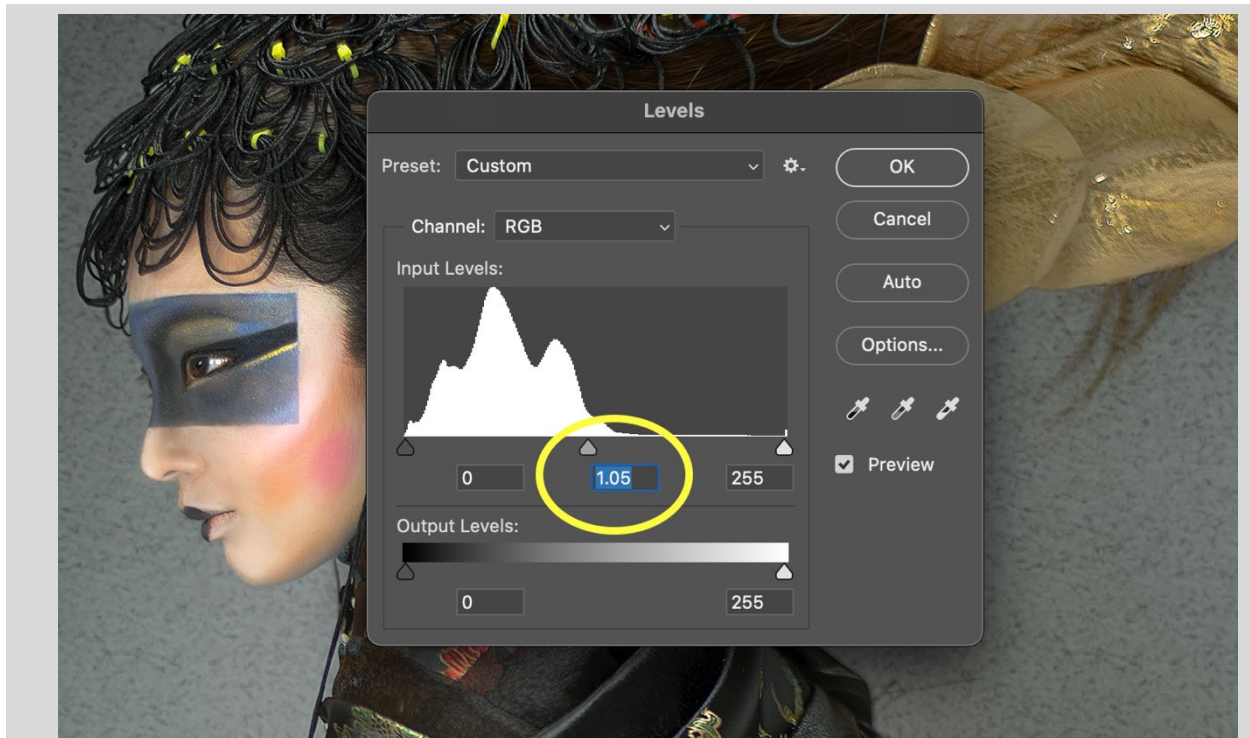


- Press 'enter' key to place image

OPTIONAL PRINTING TIPS



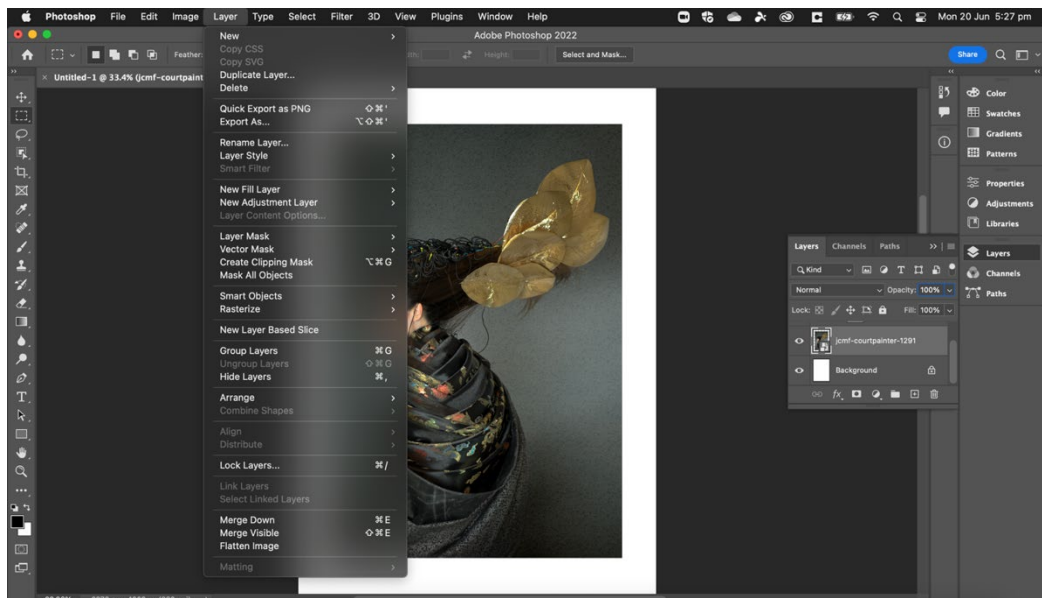
- In order for details in shadows to print well, the R, G, B readings should be >20s
- For bright white backgrounds, the R, G, B readings should be between 240 to 255
- For neutral colours and true greys, the R, G, B readings should be similar values



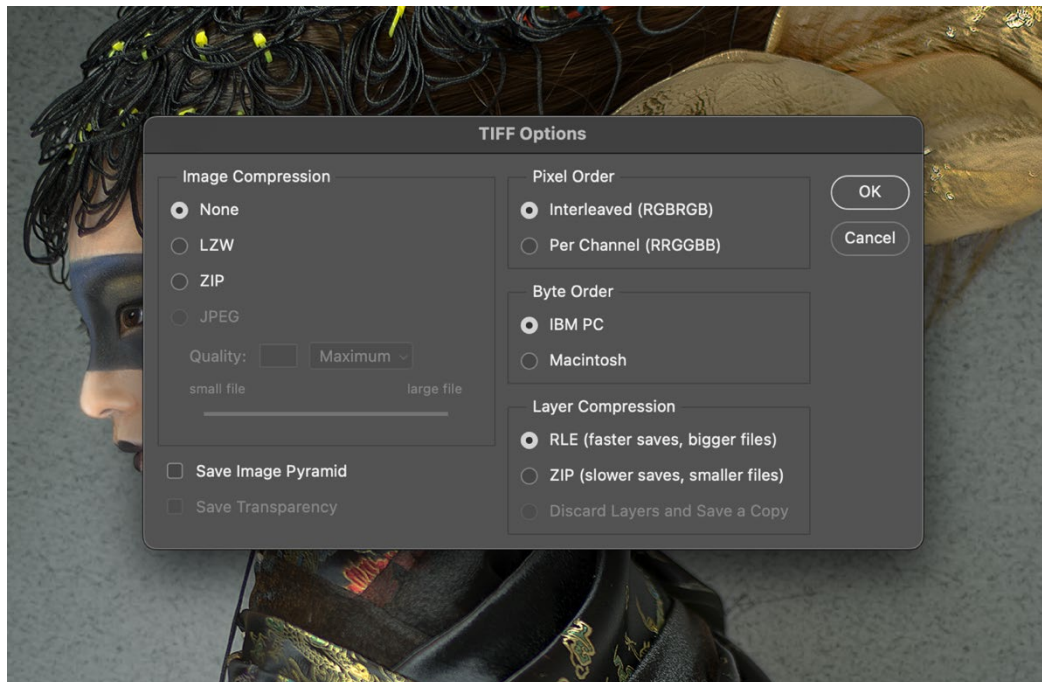
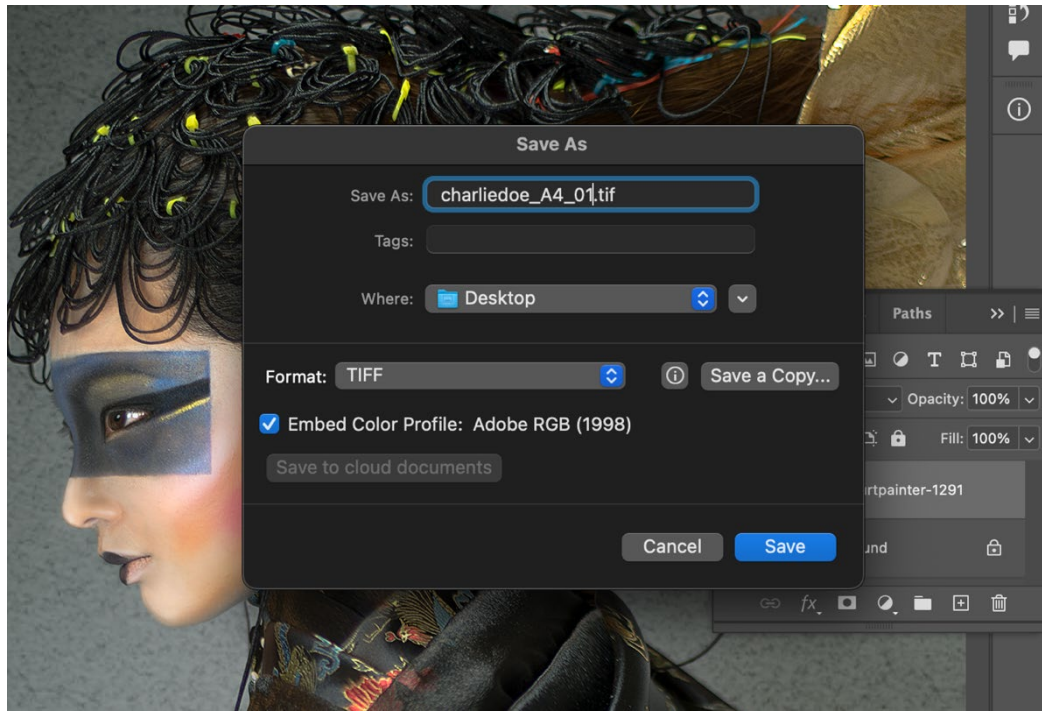
- Quick fix: Adjust image levels at the mid tones from between 1.05 to 1.10 before sending to print

3. Save document for printing

- Flatten image layers



- 'Save As...' TIFF (.tif)
- Recommended naming convention for file 'yourname_printsize_number'. Eg 'charliedoe_A4_01.tif'



4. Upload file for printing